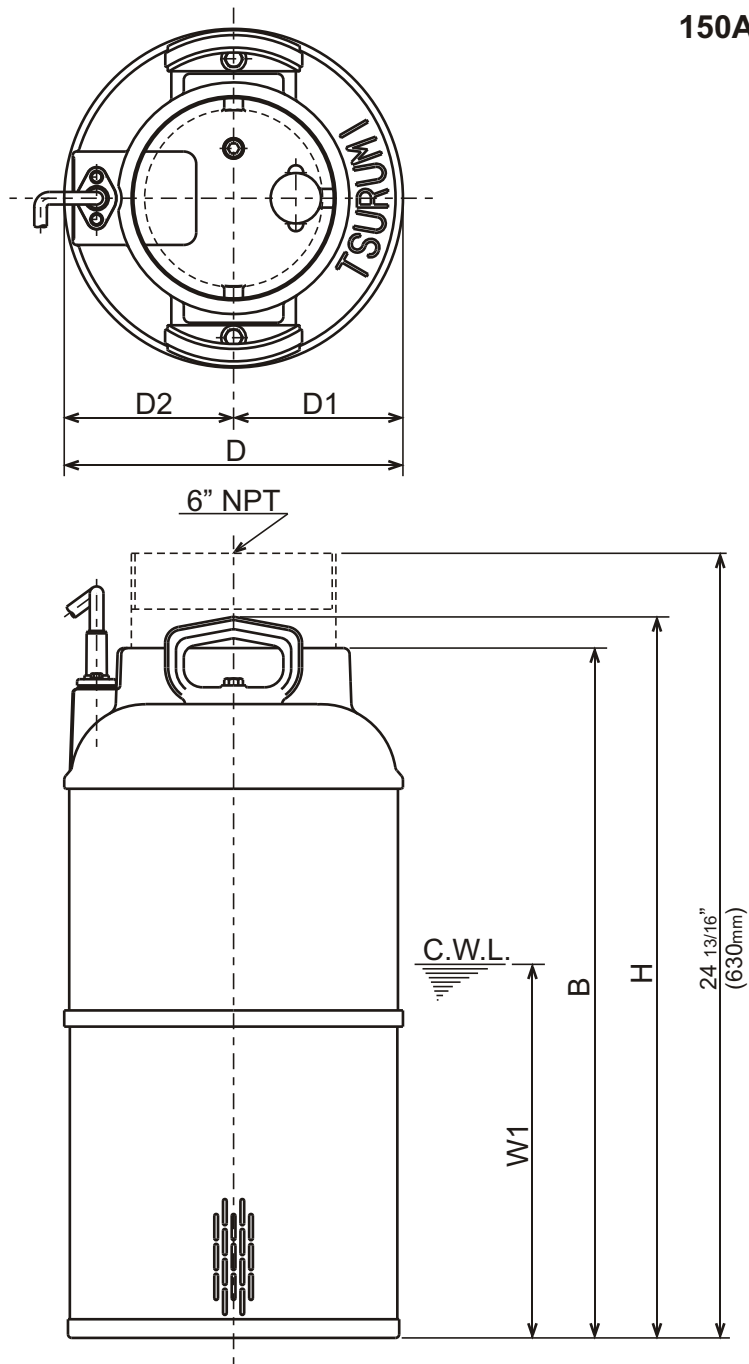


150AB41.5-61


C.W.L. : Continuous running Water Level

DIMENSIONS:USCS (Inch)

| Model | HP | NOM. SIZE | Pump & Motor | | | | | C.W.L. | Wt. (lbs.) |
|--------------|----|--------------|--------------|-------|-------|----------|----------|--------|---------------|
| | | | D | D1 | D2 | B | H | W1 | |
| 150AB41.5-61 | 2 | 6" | 10 11/16 | 5 3/8 | 5 3/8 | 21 13/16 | 22 13/16 | 11 3/4 | 97 |

DIMENSIONS:METRIC (mm)

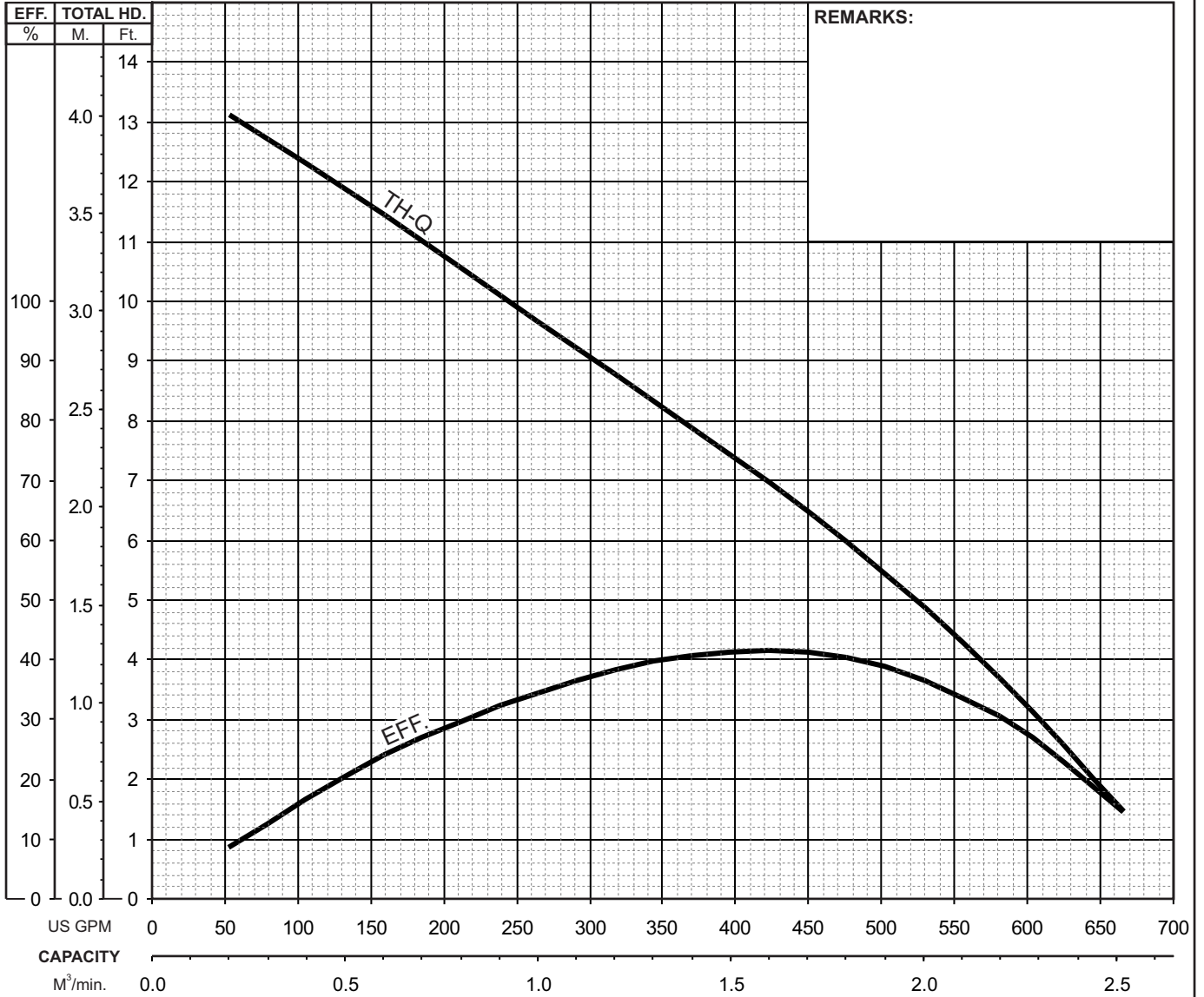
| Model | kW | NOM. SIZE | Pump & Motor | | | | | C.W.L. | Wt. (kg) |
|--------------|-----|--------------|--------------|-----|-----|-----|-----|--------|-------------|
| | | | D | D1 | D2 | B | H | W1 | |
| 150AB41.5-61 | 1.5 | 150 | 272 | 136 | 136 | 554 | 579 | 300 | 44 |



AB - SERIES PROPELLER TYPE - DEWATERING PUMPS

PERFORMANCE CURVE

| MODEL | BORE | HP | KW | RPM | SOLIDS DIA | LIQUID | SG. | VISCOSITY | TEMP. |
|--------------------------------|----------|-------|---------------|---------------|------------|--------|-----------------|------------|------------|
| 150AB41.5-61 | 6"/150mm | 2 | 1.5 | 1730 | 0.118"/3mm | Water | 1.0 | 1.123 cSt. | 60°F |
| PUMP TYPE | | PHASE | VOLTAGE | AMPERAGE | | HZ | STARTING METHOD | | INS. CLASS |
| Propeller Type Dewatering Pump | | 3 | 208-220 / 460 | 6.4-6.3 / 3.2 | | 60 | Direct On Line | | E |
| CURVE No. | DATE | PHASE | VOLTAGE | AMPERAGE | | HZ | STARTING METHOD | | INS. CLASS |
| - | - | - | - | - | | - | - | | - |



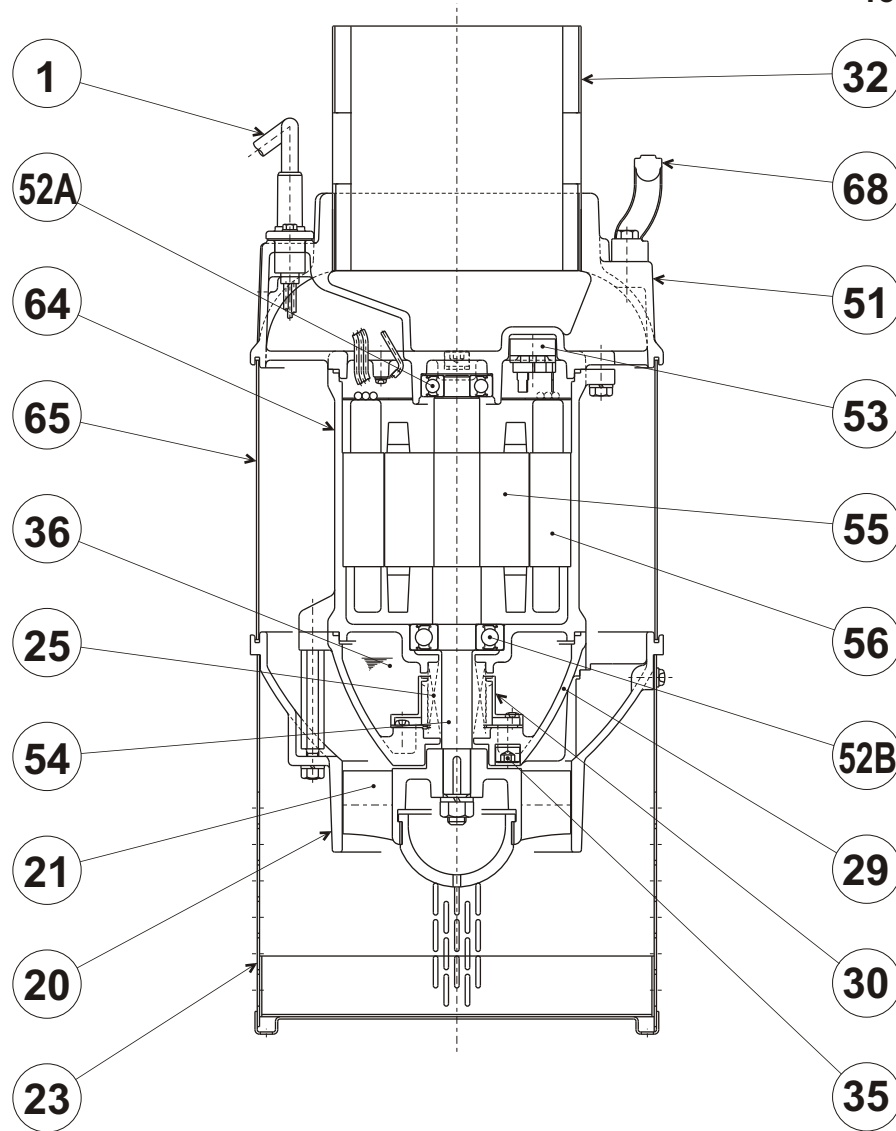


TSURUMI PUMP

**AB - SERIES
PROPELLER TYPE - DEWATERING PUMPS**

SECTIONAL VIEW

150AB41.5-61



| PART# | DESCRIPTION | MAIN MATERIAL / NOTE | ASTM, AISI CODE | RELATED DIN CODE | QTY |
|-------|----------------------|----------------------------|-----------------|------------------|-----|
| 1 | Power Cable | PVC Sheath AWG16/4-32ft | | | 1 |
| 20 | Pump Casing | Cast Iron | A48M Class30B | EN 1561 GJL-200 | 1 |
| 21 | Impeller | Cast Iron | A48M Class30B | EN 1561 GJL-200 | 1 |
| 23 | Suction Strainer | Stainless Steel | S 30400 | 1.4301 | 1 |
| 25 | Mechanical Seal | Silicon Carbide / H-20A | | | 1 |
| 29 | Oil Casing | Cast Iron | A48M Class30B | EN 1561 GJL-200 | 1 |
| 30 | Oil Lifter | PBT Plastic w/(GF+MD)40 | | | 1 |
| 32 | Discharge Connection | Cast Iron / NPT 6" | A48M Class30B | EN 1561 GJL-200 | 1 |
| 35 | Oil Plug | Stainless Steel | S 30400 | 1.4301 | 1 |
| 36 | Lubricant | White Mineral Oil ISO VG32 | | | |
| 51 | Motor Head Cover | Cast Iron | A48M Class30B | EN 1561 GJL-200 | 1 |
| 52A | Upper Bearing | #6303ZZC3 | | | 1 |
| 52B | Lower Bearing | #6305ZZC3 | | | 1 |
| 53 | Motor Protector | | | | 1 |
| 54 | Shaft | Stainless Steel | S 40300 | 1.4000 | 1 |
| 55 | Rotor | | | | 1 |
| 56 | Stator | | | | 1 |
| 64 | Motor Housing | Cast Iron | A48M Class25B | EN 1561 GJL-150 | 1 |
| 65 | Outer Cover | Stainless Steel | S 30400 | 1.4301 | 1 |
| 68 | Handle | Cast Iron | A48M Class30B | EN 1561 GJL-200 | 2 |

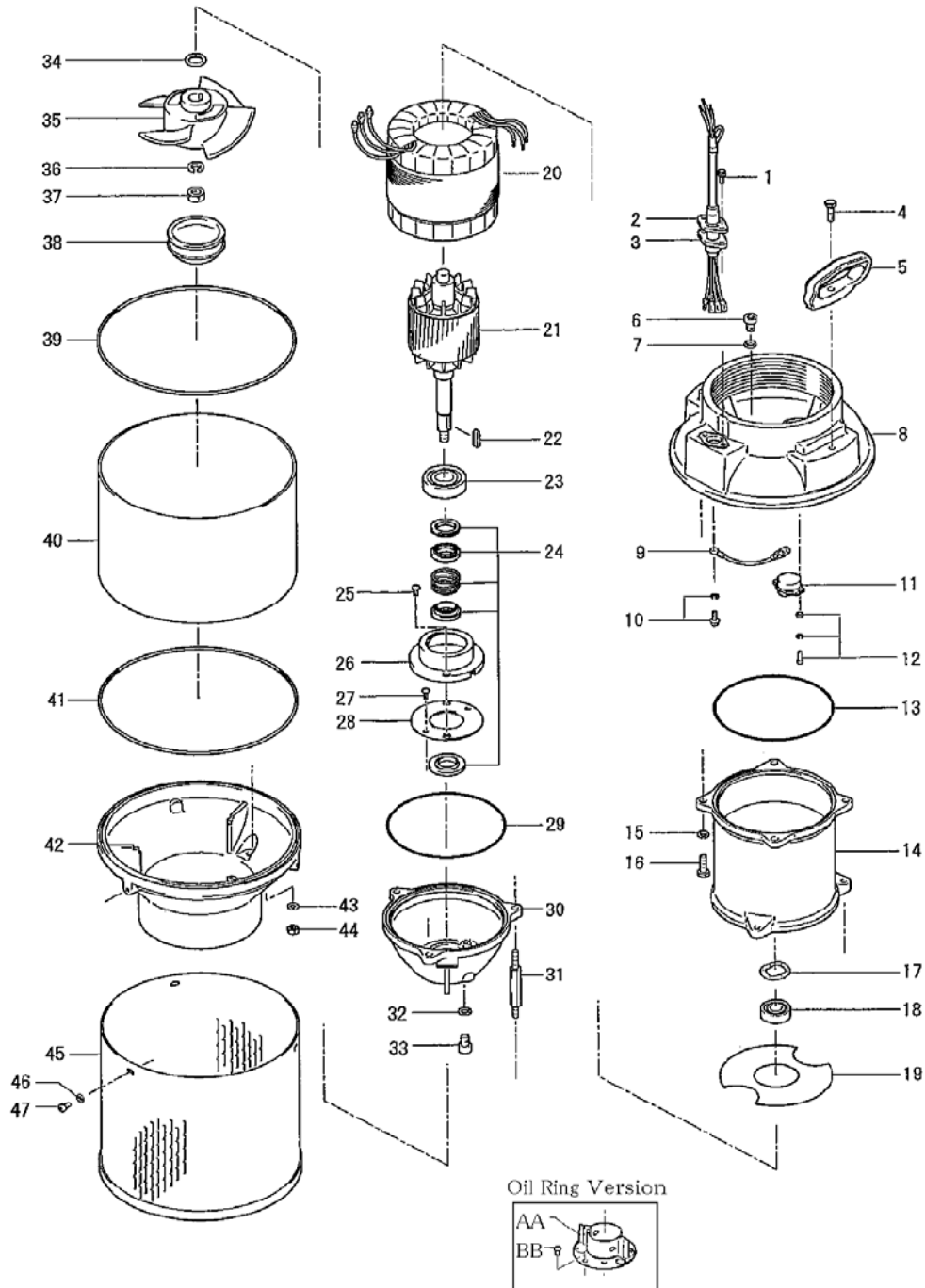
| PARTS LIST | | AXIAL FLOW DEWATERING PUMP | | | 8/9/2016 | |
|------------|------------|--|------|----------------------|----------|-------|
| ITEM | PART No. | DESCRIPTION | QTY | SIZE | MATERIAL | NOTES |
| 1 | 140-427-17 | Hex.Bolt (w/Plain Washer) | 2 | M5x15 | SUS304 | |
| 2 | 003-190-10 | Gland | 1 | | SUS316 | |
| 3 | 001-803-20 | Cabtyre Cable Set (32') 60Hz(USA) | 1 | VCT4Cx1.25mm2 | LBT | |
| 4 | 140-056-11 | Hex.Bolt | 2 | M8x30 | SUS304 | |
| 5 | 068-177-12 | Handle | 2 | AB-4(SUS) | FC | |
| 6 | 035-124-12 | Air Tightness Test Plug | 1 | M10x15 | SUS304 | |
| 7 | 121-246-11 | Packing | 1 | d10.3xd16x2t | PE | * |
| 8 | 051-186-12 | Motor Head Cover | 1 | | FC | |
| 9 | 009-000-07 | Intermediate Lead Wire | 1Set | #17072-2,L=200 | | |
| 10 | 143-085-21 | Pan Screw (w/Spring Washer) | 1 | M4x6 | SWRM | |
| 11 | 053-271-11 | Motor Protector 220V-60Hz(USA) | 1 | KA313-GCXL103 | (T) | |
| 12 | 143-126-38 | Pan Screw (w/Spring Washer/Plain Washer) | 2 | M4x12 | SWRM | |
| 13 | 122-285-15 | O-Ring | 1 | 155xd3.1 | NBR | * |
| 14 | 064-369-11 | Motor Frame | 1 | | FC | |
| 15 | 142-163-18 | Spring Washer | 4 | M8 | SUS304 | |
| 16 | 140-055-10 | Hex.Bolt | 4 | M8x25 | SUS304 | |
| 17 | 142-195-19 | Wave Washer | | 6204/6303(d47x,0.3t) | SK5 | |
| 18 | 052-106-11 | Bearing | 1 | 6303ZZC3 | | |
| 19 | 058-116-12 | Lead Wire Protection Plate | 1 | d60xd150x1t | Bakelite | |
| 20 | 056-002-95 | Stator 220V-60Hz(USA) | 1Set | | | |
| 21 | 055-446-15 | Rotor | 1Set | w/Bearing | | |
| 22 | 147-091-19 | Impeller Key | 1 | 5x5x25L | SUS403 | |
| 23 | 052-108-13 | Bearing | 1 | 6305ZZC3 | | |
| 24 | 025-252-19 | Mechanical Seal | 1 | H-20A | SiC+CCBN | |
| 25 | 143-070-23 | Pan Screw | 2 | M5x6 | SWRM | |
| 26 | 030-144-13 | Oil Lifter | 1 | H-20(A)(T) | Resin | |
| 27 | 143-070-10 | Pan Screw | 3 | M5x6 | SWRM | |
| 28 | 030-153-15 | Seal Stopper | 1 | H-20(A) | SPCC | |
| 29 | 122-285-15 | O-Ring | 1 | 155xd3.1 | NBR | * |
| 30 | 029-210-20 | Oil Casing (Oil Lifter) | 1 | AB-15T | FC | |
| 31 | 144-161-12 | Stud Bolt | 3 | M8x115(20/30) | SUS304 | |
| 32 | 121-246-11 | Packing | 1 | d10.3xd16x2t | PE | * |
| 33 | 035-124-12 | Oil Plug | 1 | M10x15 | SUS304 | |
| 34 | 040-104-25 | Impeller Shim | | d18.2xd29x0.3t | SUS304 | |
| 35 | 021-997-11 | Impeller (60Hz) | 1 | 150AB41.5-61 | FC | |
| 36 | 142-165-10 | Spring Washer | 1 | M12 | SUS304 | |
| 37 | 141-007-10 | Hex.Nut | 1 | M12 | SUS304 | |
| 38 | 047-111-13 | Impeller Thread Protection Cap | 1 | No.13 | NBR | |

| PARTS LIST | | AXIAL FLOW DEWATERING PUMP | | | 8/9/2016 | |
|------------|------------|-------------------------------------|------|------------------------|----------|-------|
| ITEM | PART No. | DESCRIPTION | QTY | SIZE | MATERIAL | NOTES |
| 39 | 121-195-14 | Packing | 1 | d260xd265.6x3t | NBR | * |
| 40 | 065-182-11 | Outer Cover | 1 | AB-15T | SUS304 | |
| 41 | 121-195-14 | Packing | 1 | d260xd265.6x3t | NBR | * |
| 42 | 020-621-18 | Pump Casing | 1 | AB-15T | FC | |
| 43 | 142-163-18 | Spring Washer | 3 | M8 | SUS304 | |
| 44 | 141-005-18 | Hex.Nut | 3 | M8 | SUS304 | |
| 45 | 023-330-16 | Strainer Stand | 1 | AB-15T | SUS304 | |
| 46 | 142-126-19 | Plain Washer | 3 | M6 | SUS304 | |
| 47 | 143-042-26 | Pan Screw | 3 | M6x10 | SUS304 | |
| | 032-000-51 | Hose Coupling | 1 | NPT-6(AB41.5) | FC | |
| | | Oil Ring Version | | | | |
| 30 | 029-210-17 | Oil Casing (Oil Ring) | 1 | AB-15T | FC | |
| AA | 030-118-21 | Oil Ring | 1 | H-20 | SPC | |
| BB | 143-070-10 | Pan Screw | 3 | M5x6 | SWRM | |
| | 173-354-14 | Packing O-Ring Set | 1Set | (Marked by *) | | |
| 7 | 121-246-11 | Packing (Air Tightness Test Plug) | 1 | d10.3xd16x2t | PE | * |
| 13 | 122-285-15 | O-Ring (Motor Head Cover/M.Frame) | 1 | 155xd3.1 | NBR | * |
| 29 | 122-285-15 | O-Ring (M.Frame/O.Casing) | 1 | 155xd3.1 | NBR | * |
| 32 | 121-246-11 | Packing (Oil Plug) | 1 | d10.3xd16x2t | PE | * |
| 39 | 121-195-14 | Packing (Pump Head Cover/Out.Cover) | 1 | d260xd265.6x3t | NBR | * |
| 41 | 121-195-14 | Packing (Out.Cover/P.Casing) | 1 | d260xd265.6x3t | NBR | * |
| | | Lubricant | | Turbine Oil VG32 600ml | | |

| PARTS LIST | | AXIAL FLOW DEWATERING PUMP | | | | 8/9/2016 |
|------------|----------|----------------------------|-----|------|----------|----------|
| ITEM | PART No. | DESCRIPTION | QTY | SIZE | MATERIAL | NOTES |

EXPLODED VIEW

150AB41.5-51/61 (150AB41.5-50/60)



C-00221-1